

User Guide

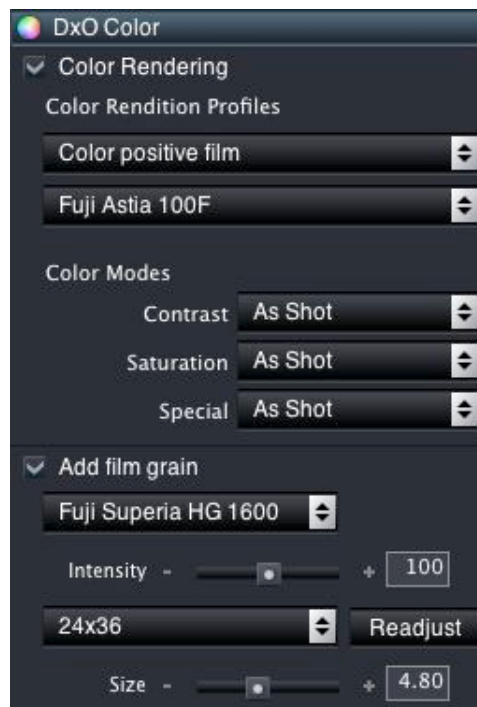
DxO FilmPack v1.1

DxO FilmPack v1.1 is available in three versions:

1. as a DxO Optics Pro v4.2 (Starter, Standard, and Elite versions) plug-in
2. as a Photoshop plug-in (CS2 , CS3, Elements 4 and 5)
3. as a stand-alone application for Macintosh (MacOS X 10.3 and 10.4) and Windows (2000, XP et Vista).

1. DxO Optics Pro plug-in

DxO FilmPack is a component that adds new functionalities to DxO Optics Pro; its mission? Give your digital images the style of the most well known film brands. The colors—and the grain!—of Kodachrome™, Tri-X™ and Velvia™ among more than 20 total options, which have been analyzed and reproduced to be applied with just one click to all your images. DxO FilmPack digitally simulates the striking colors of Kodachrome 64™, the soft grain of Tri-X™ or the well-rounded flesh tints of Astia™. All combinations of grain or color are therefore possible, for a maximum of creativity...



How to use DxO Filmpack

After activation, you access the functions of DxO FilmPack from the DxO Color Tab, in Expert Mode. Begin by clicking on the "Color rendering"

checkbox if not already selected, then scroll through the menu located just underneath "Color rendition Profiles". The activation of the DxO FilmPack causes several supplementary options to appear: Color positive film, Color negative film, Black and White film and "Cross processed film". The choice of one of these renderings updates the second menu located immediately underneath: you can then select the desired film.

Please note the two very special profiles provided in the DxO FilmPack: the "Cross Processed" renderings. This indicates a specific development mode which consists in processing slide film (such as Kodak Elite 100™) with the treatment chain adapted to negative film; or processing a negative (Fuji Superia 200™) in the chemicals reserved for slides! The very specific results give to digital photographers the opportunity to be inspired by the creative ideas of the film era.

A new option in DxO FilmPack v1.1 concerns the availability of five tonings dedicated to monochrome images. Whatever rendering profile you may have selected, the Color Modes "Special" combo Box brings you five digital emulations of traditional tonings: Gold, Ferric Sulfate, Sepia Gold, Sepia Terra and Selenium.

Grain

Note that the choice of a film triggers the application of the corresponding color profile; the grain will only be applied if the box "Add film grain" is checked (lower in the same palette). This command also allows you to apply the grain, even if you haven't chosen the color rendering of a film. In this part of the palette, you have complete control of the grain that will be incorporated into the image. You can either respect the grain corresponding to the chosen film or choose that of another film. Note that the grain is not visible below the 75% zoom level.

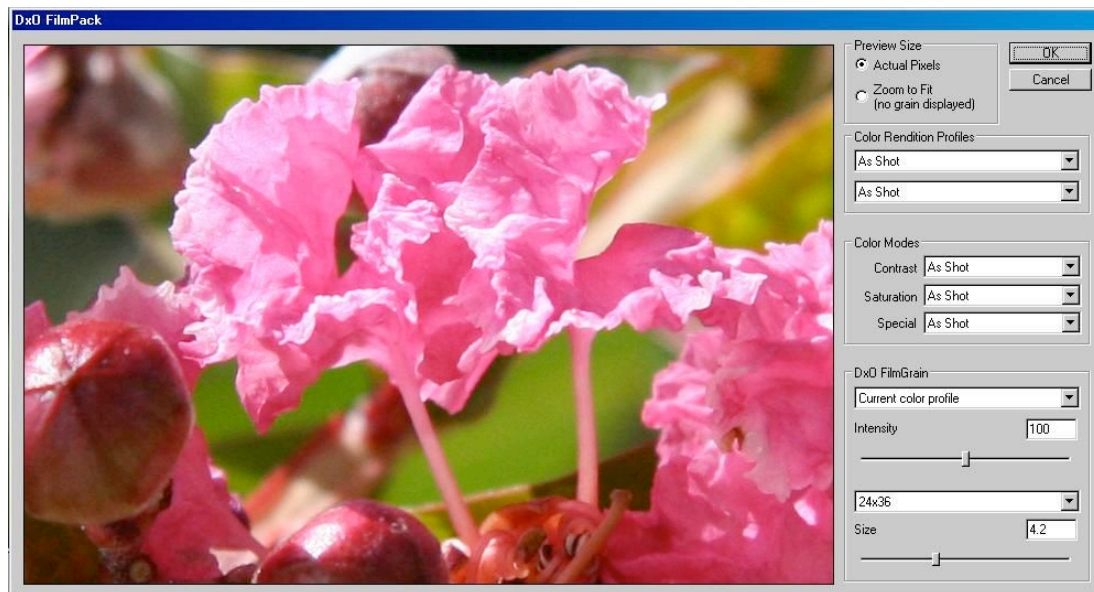
Next, you set the intensity of the grain, with the help of the corresponding cursor. The value "100" corresponds to the visual presence close to that of the original film, which can then be moderated or exaggerated. Finally, the size of the grain can also be modified: three pre-defined positions propose the sizes corresponding to the three classic formats of film photography (24x36mm, medium format 6x6cm, and large format 4x5 inches). You can then manually define the size with the help of the cursor or by entering a value in the associated field.

Obviously, all correction modules available in DxO Optics Pro can be used to modify the impact of the DxO FilmPack. In the case of color negatives, they will help you to finalize your own "color print", for example by playing with the cursors of the Lighting and White Balance palettes.

Using DxO FilmPack brings all the advantages of film simulation, while benefiting from the legendary automatic corrections of DxO Optics Pro V4, on either JPEG or RAW images. Note that the most outstanding results are obtained with RAW images.

2. Adobe Photoshop plug-in

DxO FilmPack is a Photoshop plug-in that gives your digital images the style of the most well known film brands. The colors—(and the grain!) of Kodachrome™, Tri-X™ and Velvia™ among more than 20 total options, which have been analyzed and reproduced to be applied with just one click to all your images. DxO FilmPack digitally simulates the striking colors of Kodachrome 64™, the soft grain of Tri-X™ or the well-rounded flesh tints of Astia™. All combinations of grain or color are therefore possible, for a maximum of creativity...



How to use DxO FilmPack

The DxO FilmPack plugin for Adobe Photoshop is available through the Filter Menu, DxO Labs submenu.

It will open a dedicated window where you will find a preview of the current opened image, and some specific controls. The first control proposes a choice in the "Color rendition Profiles" local menu: Color positive film, Color negative film, Black and White film and "Cross processed film".

The choice of one of these renderings updates the second menu located immediately underneath: you can then select the desired film.

Please note the two very special profiles provided in DxO FilmPack: the "Cross Processed" renderings. This indicates a specific development mode which consists in treating slide film (such as Kodak Elite 100™) with the treatment chain adapted to negative film; or treating a negative (Fuji Superia 200™) in the chemicals reserved for slides! The very original results give to digital photographers the opportunity to be inspired by the creative ideas of the film era.

DxO FilmPack v1.1 also offers you five tonings dedicated to monochrome images. Whatever rendering profile you may have selected, the Color Modes "Special" combo Box brings five digital emulations of traditional tonings: Gold, Ferric Sulfate, Sepia Gold, Sepia Terra and Selenium.

Grain

Note that the choice of a film triggers the application of the corresponding color profile; the grain will only be applied if the box "Add film grain" is checked (lower in the same palette). This command also allows you to apply the grain, even if you haven't chosen the color rendering of a film. In this part of the palette, you have complete control of the grain that will be incorporated into the image. You can either respect the grain corresponding to the chosen film or choose that of another film. Note that the grain is only visible at the 100% zoom level.

Next, you set the intensity of the grain, with the help of the corresponding cursor. The value "100" corresponds to the visual presence close to that of the original film, which can then be moderated or exaggerated. Finally, the size of the grain can also be modified: three pre-defined positions propose the sizes corresponding to the three classic formats of film photography (24x36mm, medium format 6x6cm, and large format 4x5 inches). You can then manually define the size with the help of the cursor or by entering a value in the associated field.

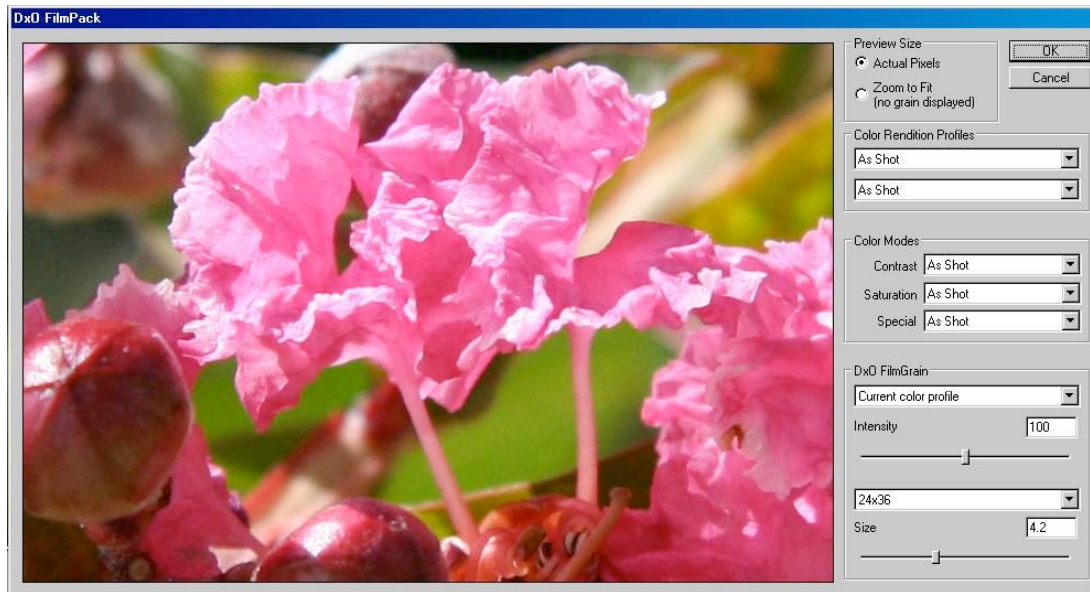
3.DxO FilmPack v1.1, stand-alone version

DxO FilmPack v1.1, standalone version, allows you to give your digital images the style of the most well known film brands. The colors—and the grain!—of Kodachrome™, Tri-X™ and Velvia™ among more than 20 total options, which have been analyzed and reproduced to be applied with just one click to all your images. DxO FilmPack digitally simulates the striking colors of Kodachrome 64™, the soft grain of Tri-X™ or the well-rounded flesh tints of Astia™. All combinations of grain or color are therefore possible, for a maximum of creativity...

A double-click on the DxO FilmPack icon launches the software. From there, you can open an image file (JPEG or TIFF formats). You will see the image in the preview area, with every control available on the side of the image. The first control proposes a choice in the "Color rendition Profiles" local menu: Color positive film, Color negative film, Black and White film and "Cross processed film".

The choice of one of these renderings updates the second menu located immediately underneath: you can then select the desired film.

Please note the two very special profiles provided in DxO FilmPack: the “Cross Processed” renderings. This indicates a specific development mode which consists in treating slide film (such as Kodak Elite 100™) with the treatment chain adapted to negative film; or treating a negative (Fuji Superia 200™) in the chemicals reserved for slides! The very original results give digital photographers the opportunity to be inspired by the creative ideas of the film era.



DxO FilmPack v1.1 also offers you five tonings dedicated to monochrome images. Whatever rendering profile you may have selected, the Color Modes “Special” combo Box brings five digital emulations of traditional tonings: Gold, Ferric Sulfate, Sepia Gold, Sepia Terra and Selenium.

Grain

Note that the choice of a film triggers the application of the corresponding color profile; the grain will only be applied if the box “Add film grain” is checked. This command also allows you to apply the grain, even if you haven’t chosen the color rendering of a film. In this part of the palette, you have complete control of the grain that will be incorporated into the image. You can either respect the grain corresponding to the chosen film or choose that of another film. Note that the grain is only visible at the 100% zoom level.

Next, you set the intensity of the grain, with the help of the corresponding cursor. The value “100” corresponds to the visual presence close to that of the original film, which can then be moderated or exaggerated. Finally, the size of the grain can also be modified: three pre-defined positions propose the sizes corresponding to the three classic formats of film photography (24x36mm, medium format 6x6cm, and large format 4x5 inches). You can then manually define the size with the help of the cursor or by entering a value in the associated field.

